

Alexa

Brushed Nickel with etched white linen glass and
Antique Bronze with etched amber linen glass.

09 Brushed Nickel

20 Antique Bronze

*P2959-09 Brushed Nickel
P2959-20 Antique Bronze
4.5" W., 9.37" ht., 6.12" D.
1 medium base, 100w max.



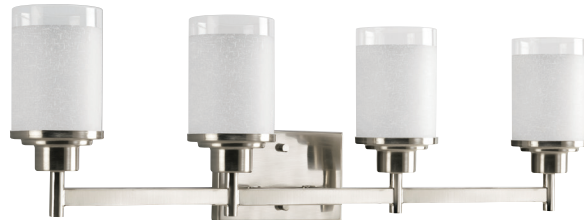
P2977-09 Brushed Nickel
*P2977-20 Antique Bronze
13" W., 9.5" ht.
2 medium base, 100w max.



P2978-09 Brushed Nickel
*P2978-20 Antique Bronze
22" W., 9.43" ht.
3 medium base, 100w max.



*P2998-09 Brushed Nickel
P2998-20 Antique Bronze
31" W., 9.43" ht.
4 medium base, 100w max.



*Shown in finish
All fixtures:



Wisten

Etched glass.

09 Brushed Nickel

P2794-09 Brushed Nickel
4.5" W., 8.37" ht., 6.25" D.
1 medium base, 100w max.



P2795-09 Brushed Nickel
12.5" W., 8.25" ht.
2 medium base, 100w max.



P2796-09 Brushed Nickel
21" W., 8.25" ht.
3 medium base, 100w max.



P2797-09 Brushed Nickel
29.5" W., 8.25" ht.
4 medium base, 100w max.



All fixtures:

